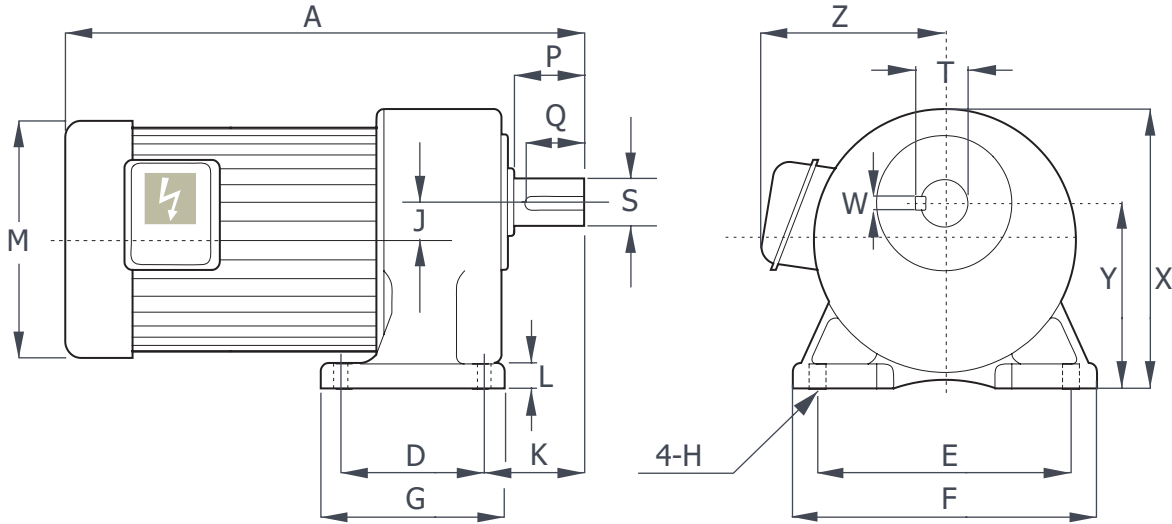
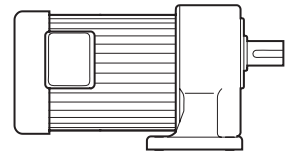
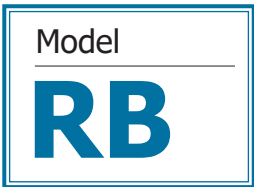


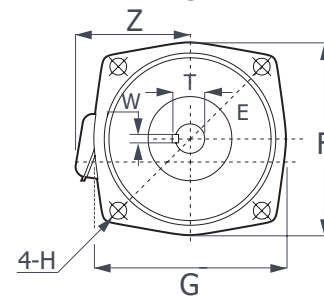
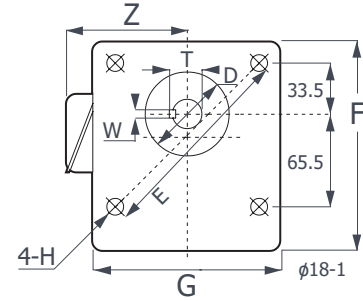
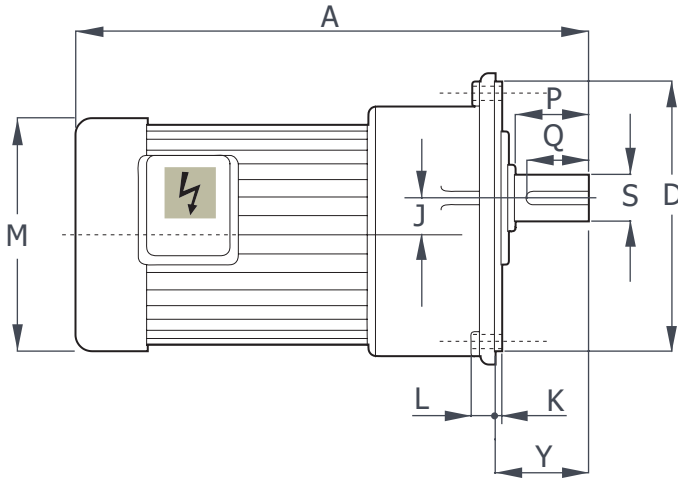
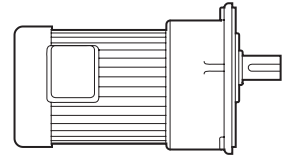
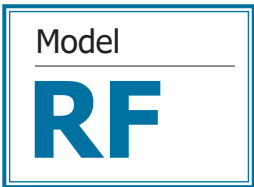
臥式齒輪減速機馬達



馬力 HP	減速比 Gear Ratio	A	D	E	G	F	H	L	J	K	M	X	Y	Z	出力軸端 Output Shaft End				
															P	Q	S	T	W
0.2KW 1/4 HP (4P)	250-1800	405(430)	130	170	167	208	13	17	27	73	126	197	130	115	55	50	32	35.5	10
0.4KW 1/2 HP (4P)	100-200	390(440)	130	170	167	208	13	17	27	73	142	197	130	120	55	50	32	35.5	10
	250-1800	480(530)	150	210	198	252	15	18	32.5	93	142	227	150	120	65	60	40	43.5	10
0.75KW 1 HP (4P)	30-120	410(460)	130	170	167	208	13	17	27	73	156	197	130	130	55	50	32	35.5	10
	125-200	450(500)	150	210	198	252	15	18	32.5	93	156	227	150	130	65	60	40	43.5	10
1.5KW 2 HP (4P)	5-30	420(470)	130	170	167	208	13	17	27	73	179	197	130	145	55	50	32	35.5	10
	40-100	460(510)	150	210	198	252	15	18	32.5	93	179	227	150	145	65	60	40	43.5	10
	120-200	470(520)	150	210	198	252	15	18	32.5	93	179	227	150	145	65	60	40	43.5	10
2.2KW 3 HP (4P)	5-30	475(525)	150	210	198	252	15	18	32.5	93	179	227	150	160	65	60	40	43.5	10

* 本公司因業務需求，所有規格尺寸和設計特性如有變更，恕不另行通知。

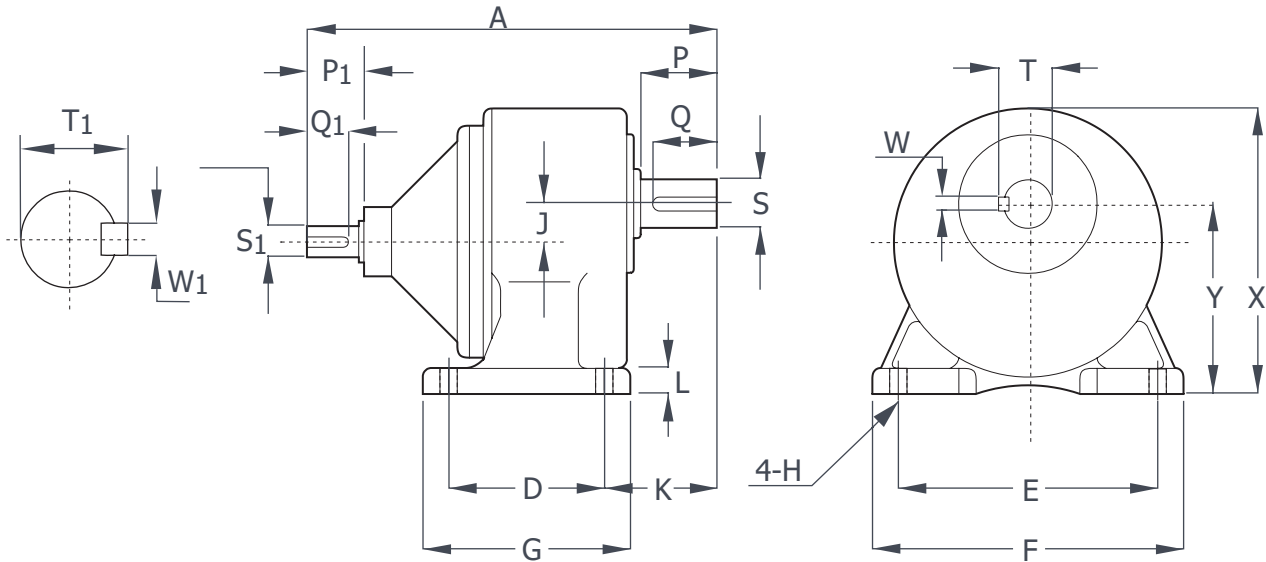
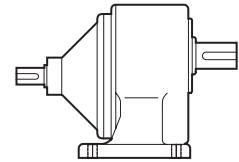
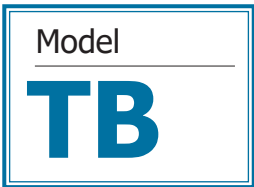
立式齒輪減速機馬達



馬力 HP	減速比 Gear Ratio	A	D	E	G	F	H	L	J	K	M	Y	Z	出力軸端 Output Shaft End				
														P	Q	S	T	W
0.2KW 1/4 HP (4P)	250-1800	435(450)	180	250	215	230	13	15	27	5	126	62	115	55	50	32	35.5	10
0.4KW 1/2 HP (4P)	100-200	395(445)	180	250	215	230	13	15	27	5	142	62	120	55	50	32	35.5	10
	250-1800	480(580)	230	310	265	285	15	20	32.5	5	142	72	120	65	60	40	43.5	10
0.75KW 1 HP (4P)	30-120	410(460)	180	250	215	230	13	15	27	5	156	62	130	55	50	32	35.5	10
	125-200	465(505)	230	310	265	285	15	20	32.5	5	156	72	130	65	60	40	43.5	10
1.5KW 2 HP (4P)	5-30	420(470)	180	250	215	230	13	15	27	5	179	62	145	55	50	32	35.5	10
	40-100	460(510)	230	310	265	285	15	20	32.5	5	179	72	145	65	60	40	43.5	10
	120-200	470(520)	230	310	265	285	15	20	32.5	5	179	72	145	65	60	40	43.5	10
2.2KW 3 HP (4P)	5-30	475(525)	230	310	265	285	15	20	32.5	5	179	82	160	65	60	40	43.5	10

* All Specifications, dimensions and design characteristics shown in this catalogue are subject to change without notices.

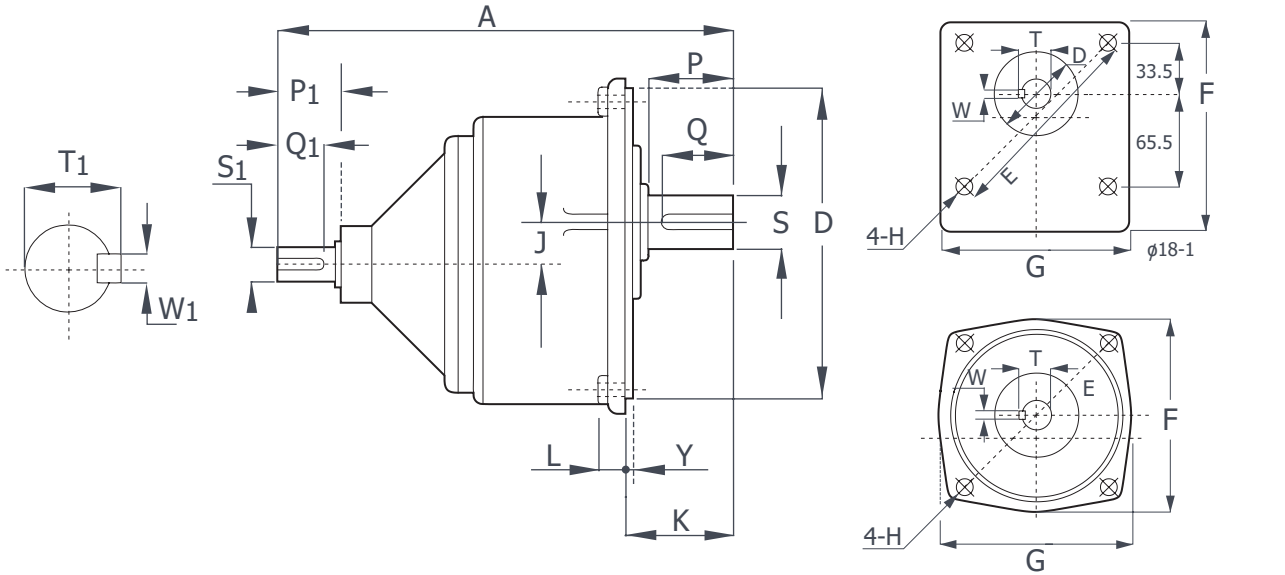
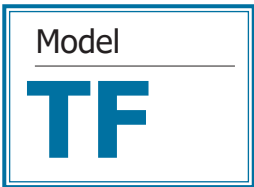
臥式雙軸型齒輪減速機



馬力 HP	減速比 Gear Ratio	A	D	E	G	F	H	L	J	K	X	Y	入力軸端 Input Shaft End					出力軸端 Output Shaft End				
													P ₁	Q ₁	S ₁	T ₁	W ₁	P	Q	S	T	W
0.2KW 1/4 HP	250-1800	288	130	170	167	208	13	17	27	73	197	130	25	22	11(14)	13.5(17)	4(5)	55	50	32	35.5	10
0.4KW 1/2 HP	100-200	241	130	170	167	208	13	17	27	73	197	130	30	27	14	17	5	55	50	32	35.5	10
	250-1800	243	150	210	198	252	15	18	32.5	93	227	150	30	27	14	17	5	65	60	40	43.5	10
0.75KW 1 HP	30-120	260	130	170	167	208	13	17	27	73	197	130	35	32	19	22	6	55	50	32	35.5	10
	125-200	286	150	210	198	252	15	18	32.5	93	227	150	35	32	19	22	6	65	60	40	43.5	10
1.5KW 2 HP	5-30	275	130	170	167	208	13	17	27	73	197	130	40	35	24	28	8	55	50	32	35.5	10
	40-100	312	150	210	198	252	15	18	32.5	93	227	150	40	35	24	28	8	65	60	40	43.5	10
	120-200	312	150	210	198	252	15	18	32.5	93	227	150	40	35	24	28	8	65	60	40	43.5	10
2.2KW 3 HP	5-30	316	160	230	198	252	15	18	32.5	93	227	150	45	40	28	32	8	65	60	40	43.5	10

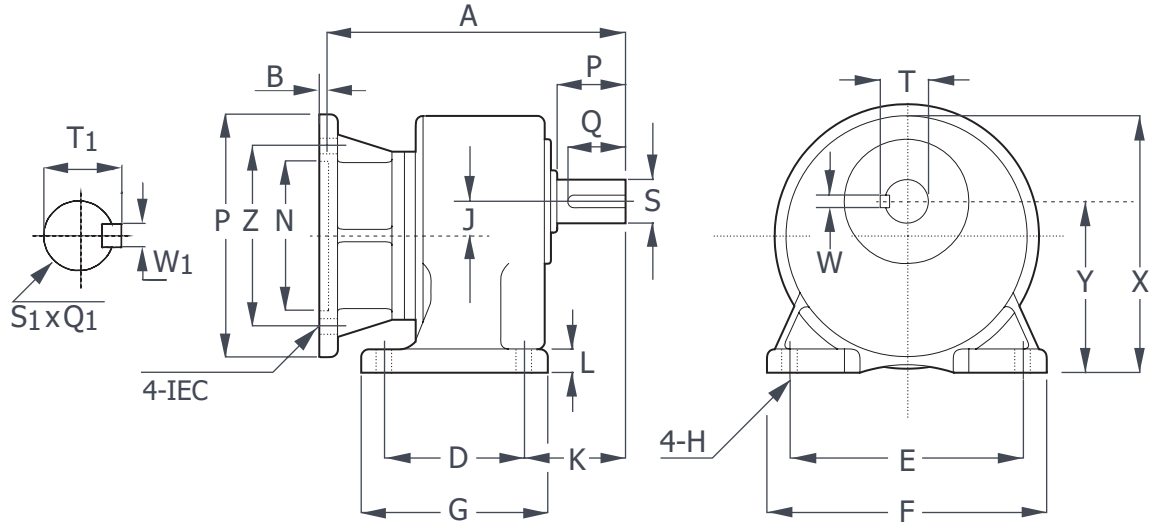
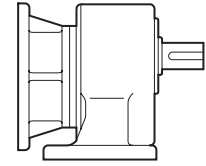
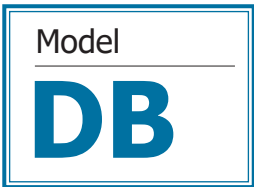
* All Specifications, dimensions and design characteristics shown in this catalogue are subject to change without notices.

立式雙軸型齒輪減速機



馬力 HP	減速比 Gear Ratio	A	D	E	G	F	H	L	J	Y	K	入力軸端 Input Shaft End					出力軸端 Output Shaft End				
												P ₁	Q ₁	S ₁	T ₁	W ₁	P	Q	S	T	W
0.2KW 1/4 HP	250-1800	288	180	250	215	230	13	15	27	5	62	25	22	11(14)	13.5(17)	4(5)	55	50	32	35.5	10
0.4KW 1/2 HP	100-200	241	180	250	215	230	13	15	27	5	62	30	27	14	17	5	55	50	32	35.5	10
	250-1800	343	230	310	265	285	15	20	32.5	5	72	30	27	14	17	5	65	60	40	43.5	10
0.75KW 1 HP	30-120	260	180	250	215	230	13	15	27	5	62	35	32	19	22	6	55	50	32	35.5	10
	125-200	286	230	310	265	285	15	20	32.5	5	72	35	32	19	22	6	65	60	40	43.5	10
1.5KW 2 HP	5-30	275	180	250	215	230	13	15	27	5	62	40	35	24	28	8	55	50	32	35.5	10
	40-100	312	230	310	265	285	15	20	32.5	5	72	40	35	24	28	8	65	60	40	43.5	10
	120-200	312	230	310	265	285	15	20	32.5	5	72	40	35	24	28	8	65	60	40	43.5	10
2.2KW 3 HP	5-30	316	230	310	265	285	15	20	32.5	5	72	45	40	28	32	8	65	60	40	43.5	10

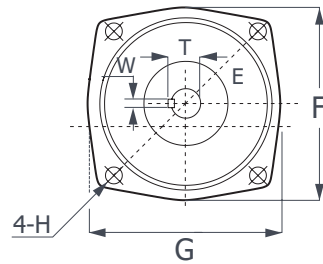
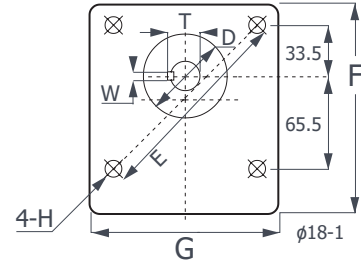
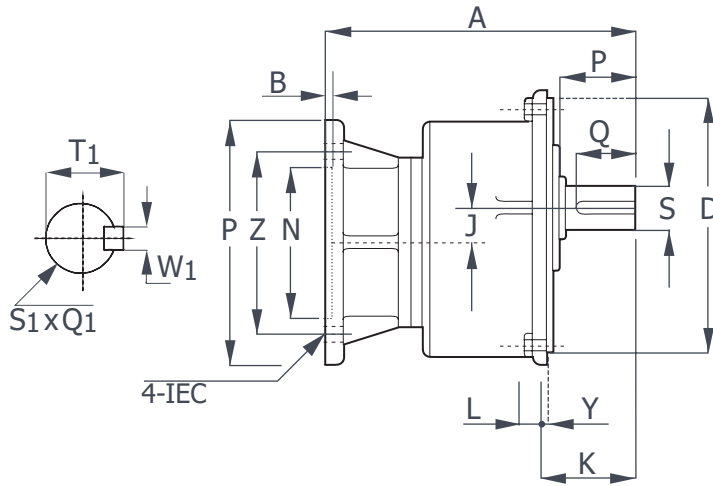
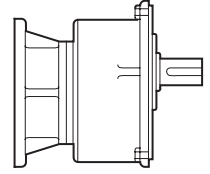
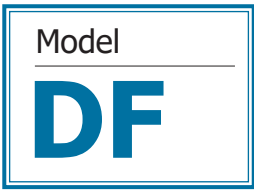
臥式入力法蘭齒輪減速機



馬力 HP	減速比 Gear Ratio																入力軸端 Input Shaft End				出力軸端 Output Shaft End				
		A	D	E	G	F	H	L	J	K	X	Y	P	Z	N	B	Q ₁	S ₁	T ₁	W ₁	P	Q	S	T	W
0.2KW 1/4 HP	250-1800	267	130	170	167	208	13	17	27	73	197	130	160	130	110	4.5	33	11(14)	13.5(17)	4(5)	55	50	32	31	10
	100-200	267	130	170	167	208	13	17	27	73	197	130	160	130	110	4.5	36	14	17	5	55	50	32	31	10
0.4KW 1/2 HP	250-1800	172	150	210	198	252	15	18	32.5	93	227	150	160	130	110	4.5	36	14	17	5	65	60	40	43.5	10
	30-120	223	130	170	167	208	13	17	27	73	197	130	200	165	130	4.5	42	19	22	6	55	50	32	35.5	10
0.75KW 1 HP	125-200	250	150	210	198	252	15	18	32.5	93	227	150	200	165	130	4.5	42	19	22	6	65	60	40	43.5	10
	5-30	236	130	170	167	208	13	17	27	73	197	130	200	165	130	4.5	53	24	28	8	55	50	32	35.5	10
1.5KW 2 HP	40-100	273	150	210	198	252	15	18	32.5	93	227	150	200	165	130	4.5	53	24	28	8	65	60	40	43.5	10
	120-200	273	150	210	198	252	15	18	32.5	93	227	150	200	165	130	4.5	53	24	28	8	65	60	40	43.5	10
2.2KW 3 HP	5-30	276	150	210	198	252	15	18	32.5	93	227	150	250	215	180	5	62	28	32	8	65	60	40	43.5	10

* All Specifications, dimensions and design characteristics shown in this catalogue are subject to change without notices.

立式入力法蘭齒輪減速機



馬力 HP	減速比 Gear Ratio	A	D	E	G	F	H	L	J	Y	K	P	Z	N	B	入力軸端 Input Shaft End				出力軸端 Output Shaft End				
																Q ₁	S ₁	T ₁	W ₁	P	Q	S	T	W
0.2KW 1/4 HP	250-1800	267	180	250	215	230	13	15	27	5	62	160	130	110	4.5	33	11(14)	13.5(17)	4(5)	55	50	32	31	10
0.4KW 1/2 HP	100-200	212	180	250	215	230	13	15	27	5	62	160	130	110	4.5	36	14	17	5	55	50	32	31	10
	250-1800	313	230	310	265	285	15	20	32.5	5	72	160	130	110	4.5	36	14	17	5	65	60	40	43.5	10
0.75KW 1 HP	30-120	223	180	250	215	230	13	15	27	5	62	200	165	130	4.5	42	19	22	6	55	50	32	35.5	10
	125-200	250	230	310	265	285	15	20	32.5	5	72	200	165	130	4.5	42	19	22	6	65	60	40	43.5	10
1.5KW 2 HP	5-30	236	180	250	215	230	13	15	27	5	62	200	165	130	4.5	53	24	28	8	55	50	32	35.5	10
	40-100	273	230	310	265	285	15	20	32.5	5	72	200	165	130	4.5	53	24	28	8	65	60	40	43.5	10
	120-200	273	230	310	265	285	15	20	32.5	5	72	200	165	130	4.5	53	24	28	8	65	60	40	43.5	10
2.2KW 3 HP	5-30	276	230	310	265	285	15	20	32.5	5	72	250	215	180	5	62	28	32	8	65	60	40	43.5	10